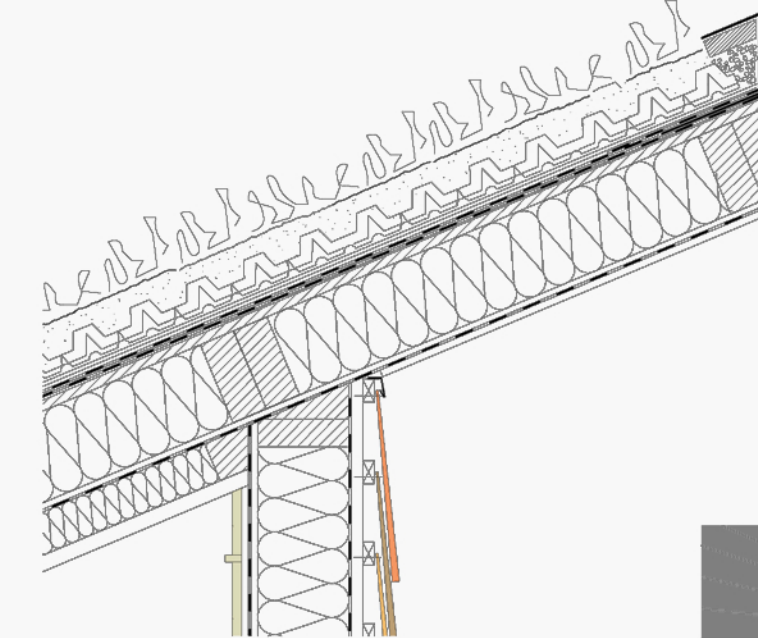
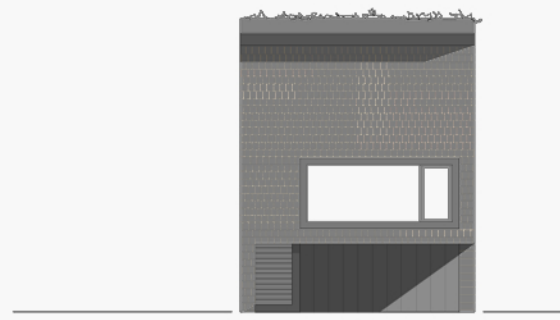
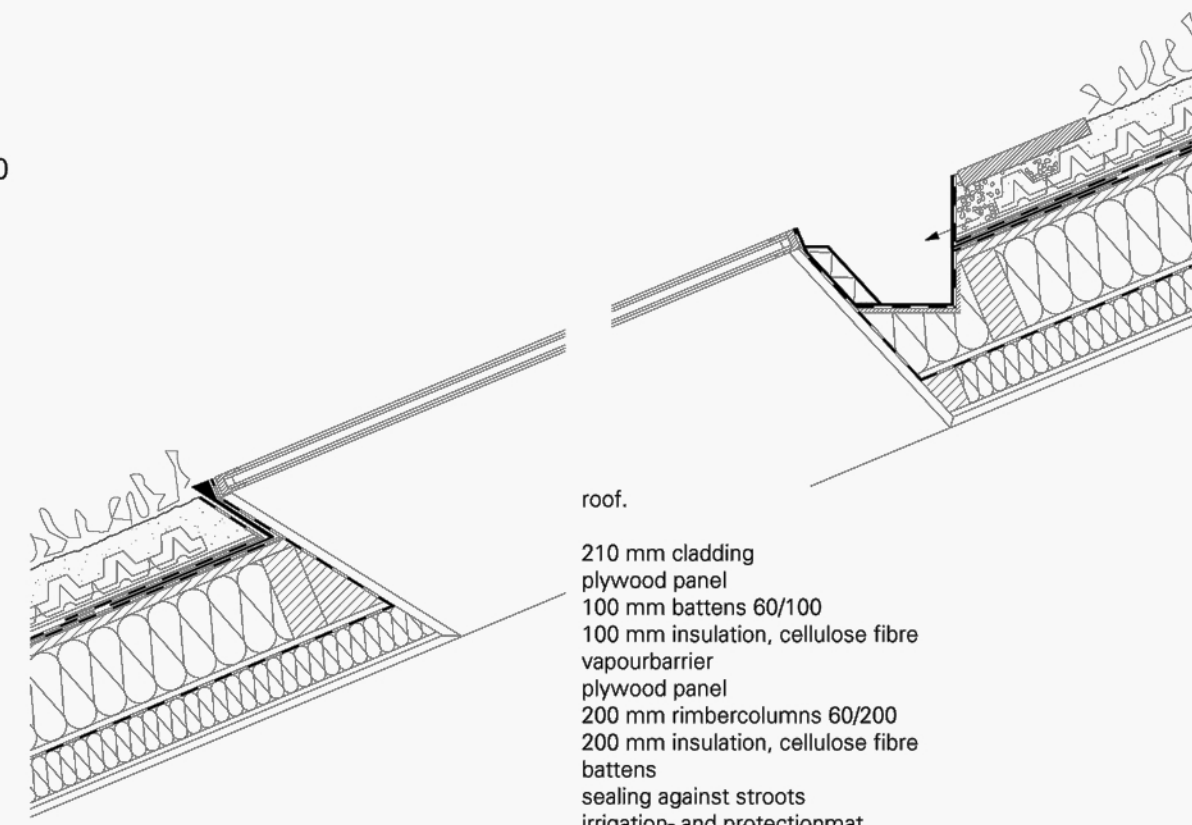
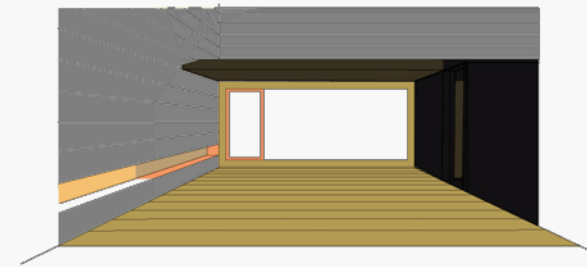


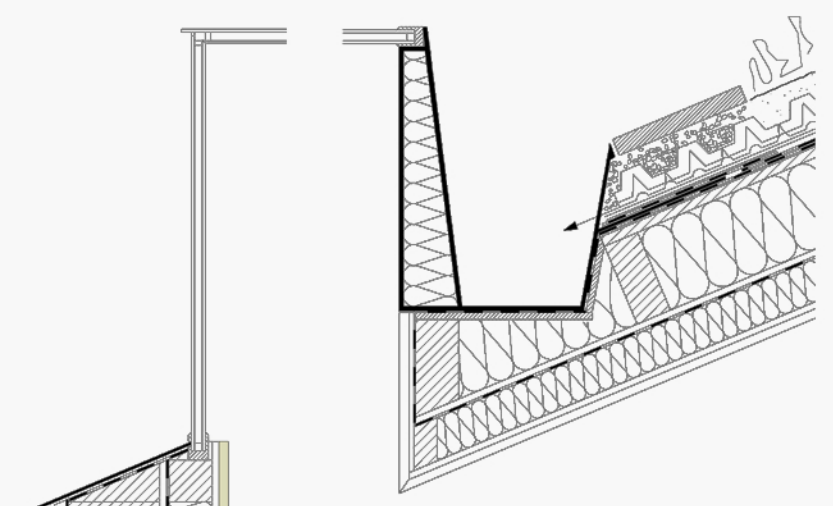
east and south elevation 1:150



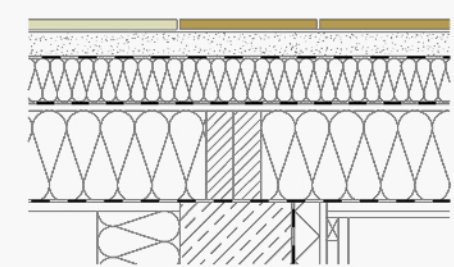
eastern wall section 1:15



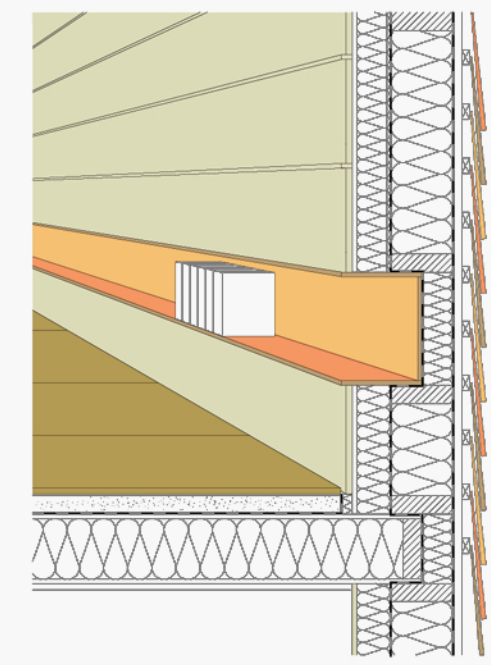
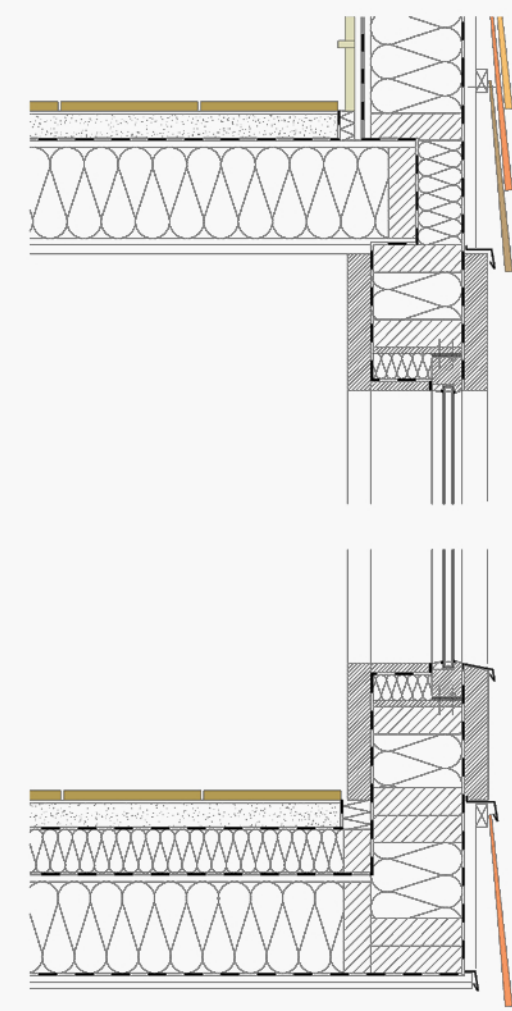
roof.
 210 mm cladding
 plywood panel
 100 mm battens 60/100
 100 mm insulation, cellulose fibre
 vapourbarrier
 plywood panel
 200 mm timbercolumns 60/200
 200 mm insulation, cellulose fibre
 battens
 sealing against strousts
 irrigation- and protectionmat,
 notdecompostable syntheticmat out of polypropylene,
 7 mm, ca. 650 g/m²
 drainage slab out of 'recyclinghartfoam', 75 mm, 1,9 kg/m²
 soil
 jute erosion control texture, meshnumber 3 x 4 cm
 plantlayer



external wall.
 shingles two-ply covering larch
 30 mm battens 30/50
 airbrake
 200 mm timbercolumns 60/200
 200 mm insulation, cellulose fibre
 plywood panel
 vapourbarrier
 100 mm battens 60/100
 100 mm insulation, cellulose fibre
 plywood panel
 cladding ash



floor.
 20 mm floorboards oak 20/300
 floating floorscreed
 dividing layer
 100 mm battens 60/100
 100 mm in pactsound insulation
 vapourbarrier
 plywood panel
 200 mm timbercolumns 60/200
 200 mm insulation, cellulose fibre
 airbrake
 plywood panel
 cladding



longitudinalsection 1:10

