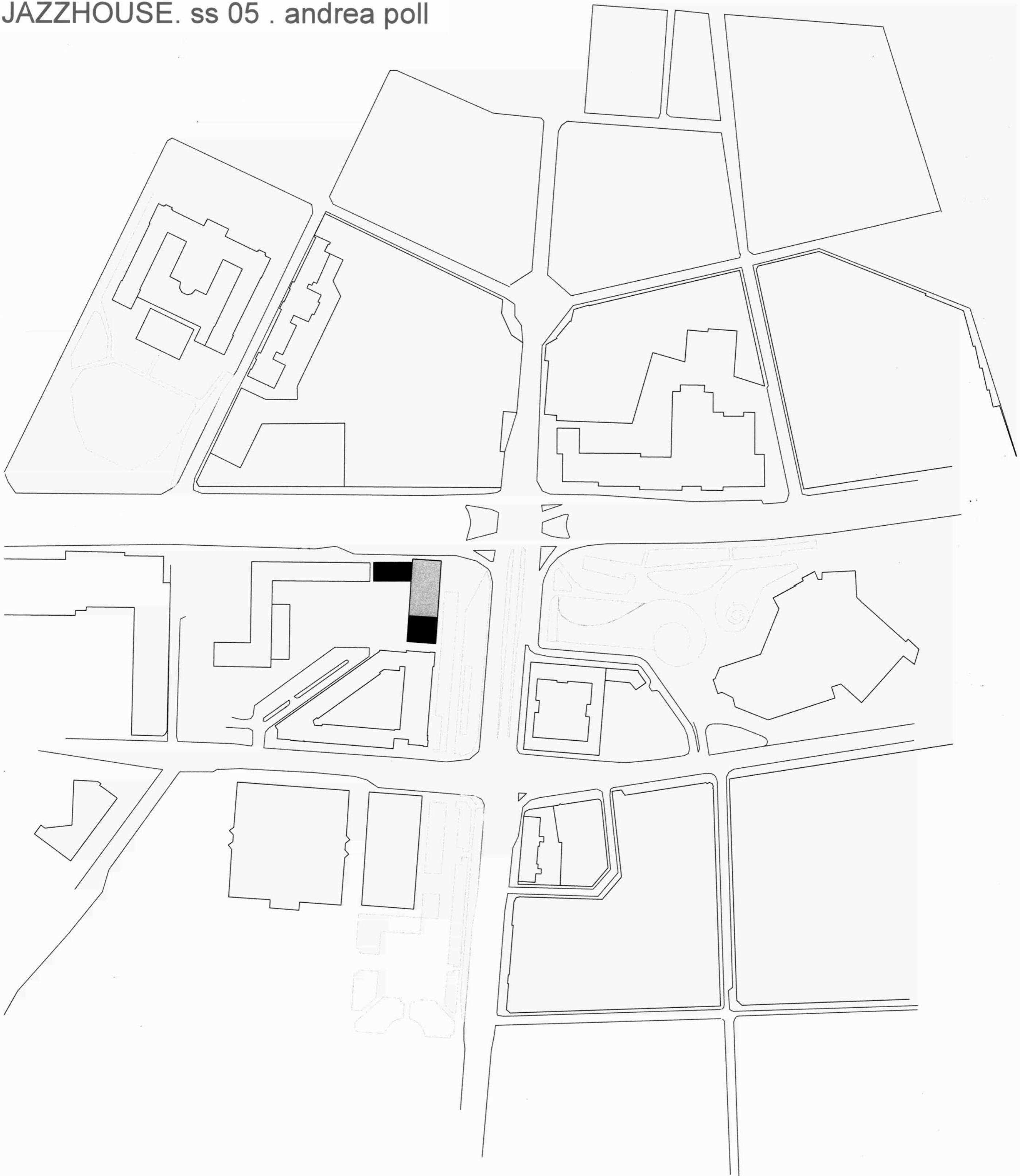
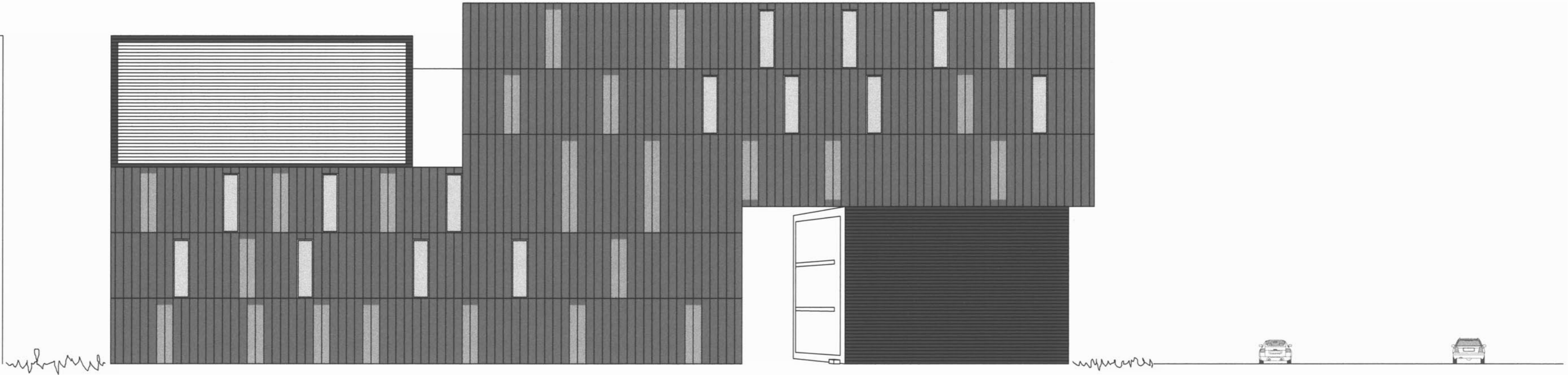
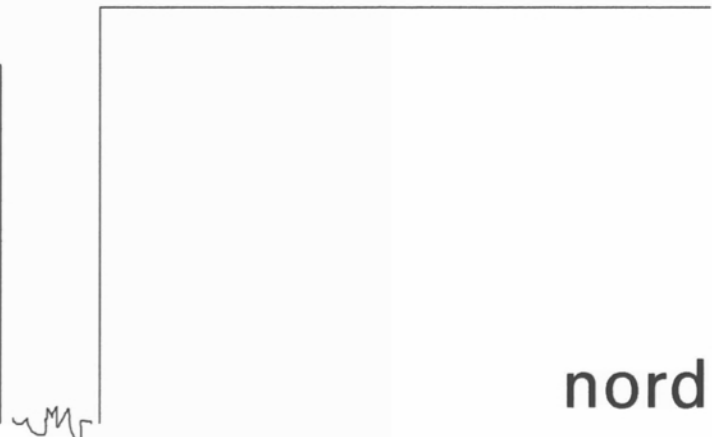
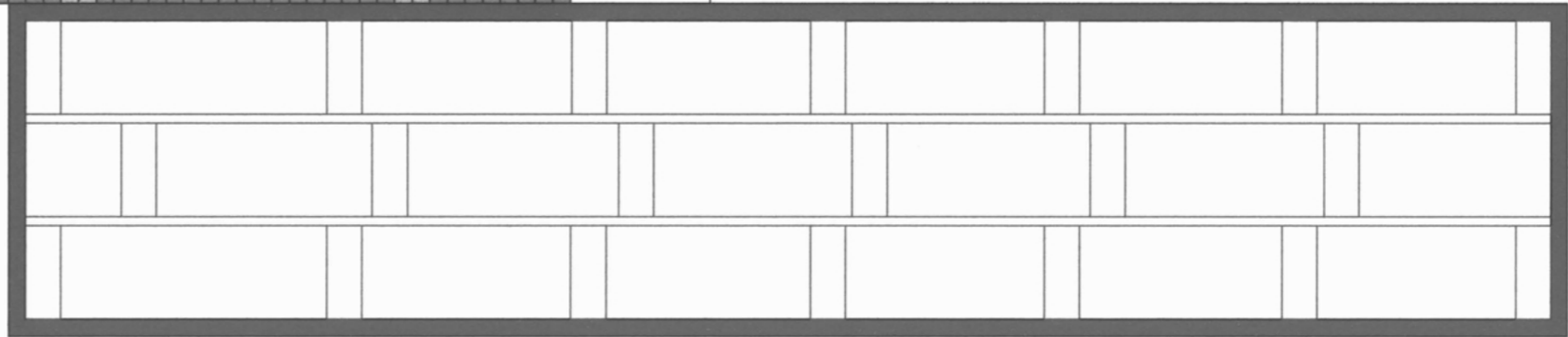
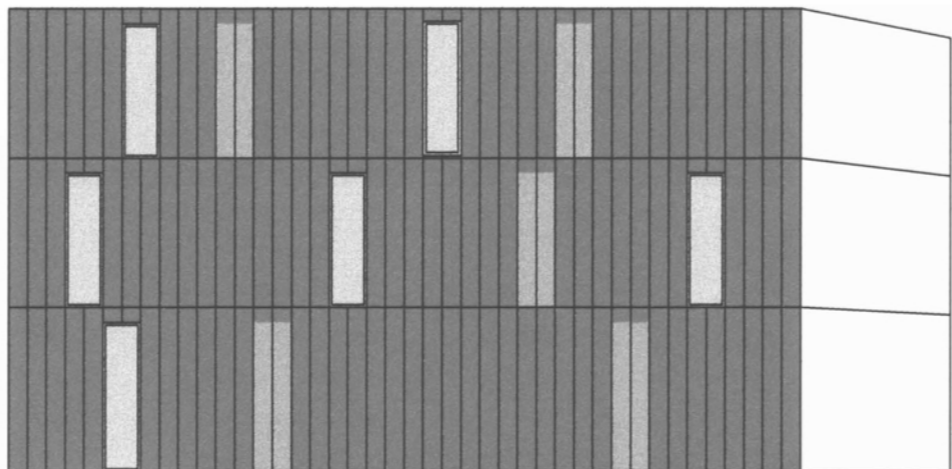


JAZZHOUSE. ss 05 . andrea poll



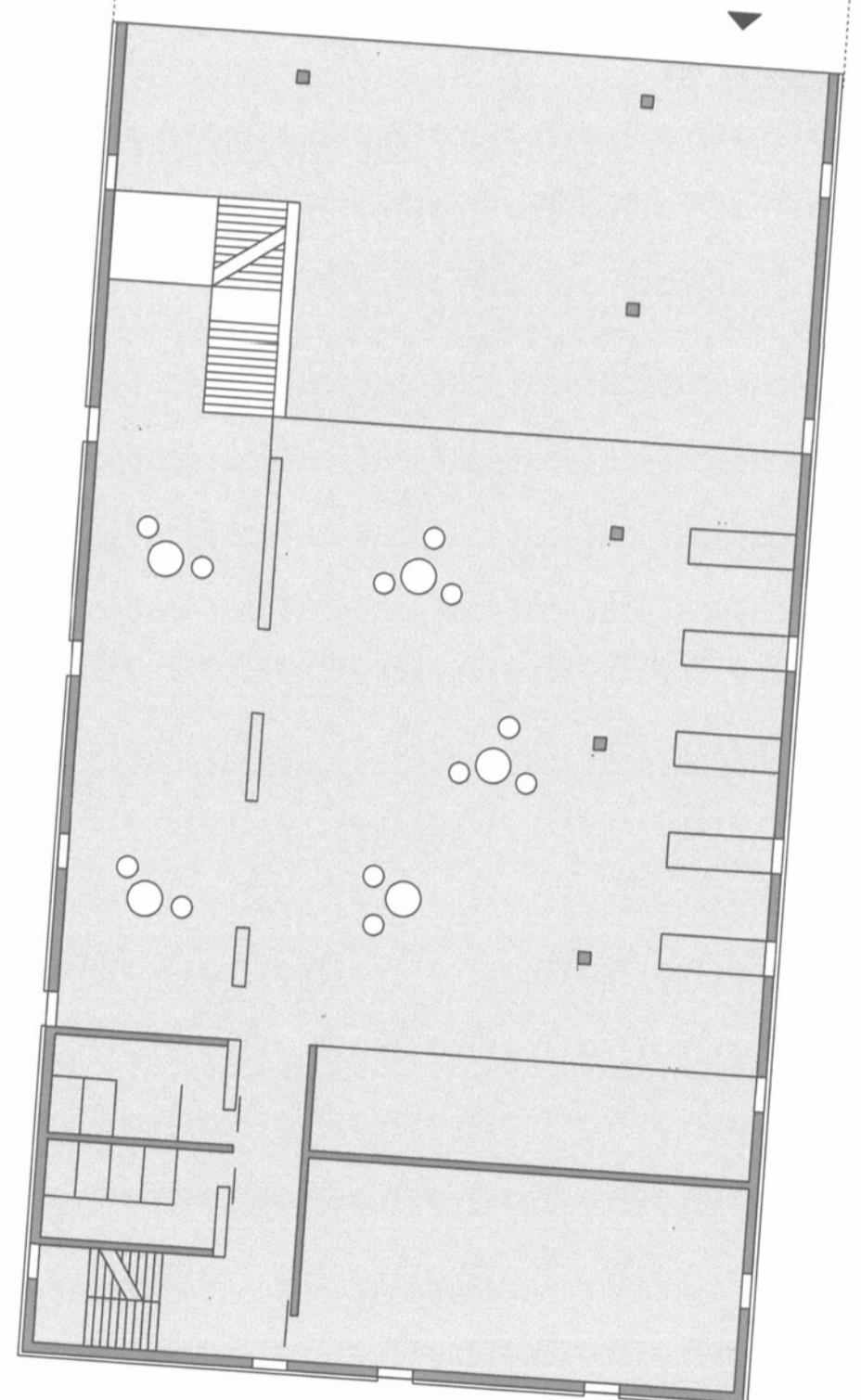
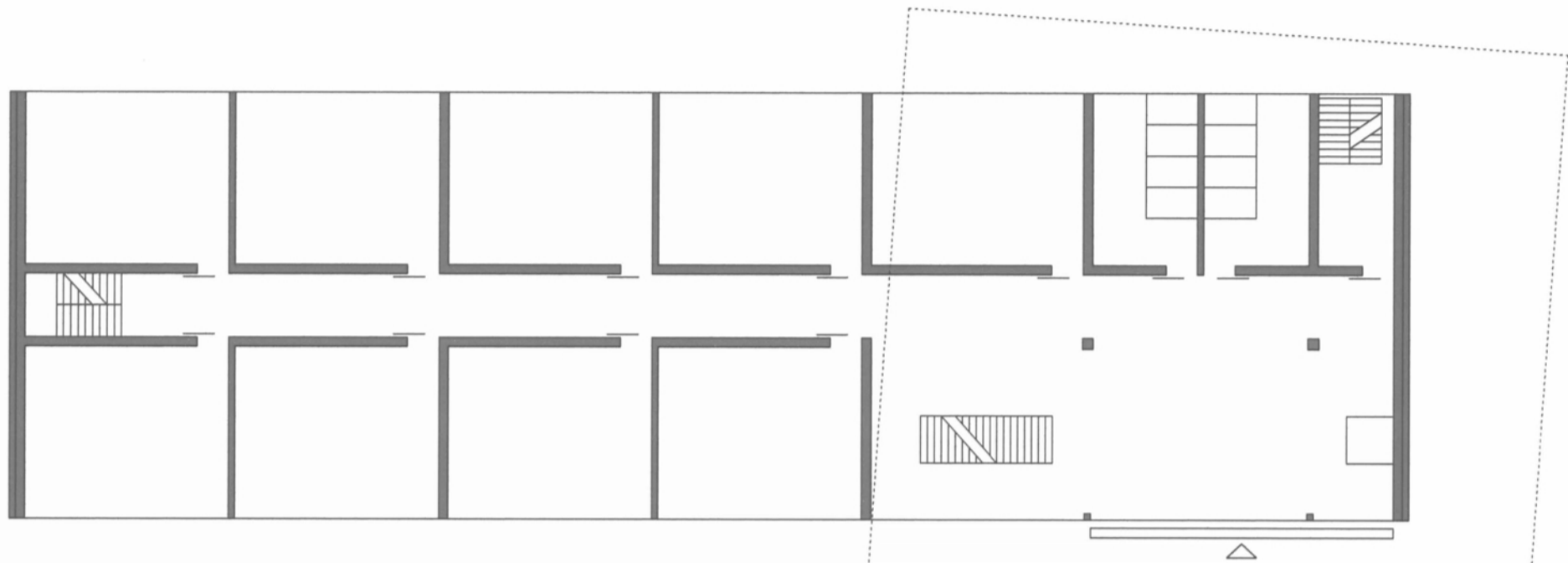
ost





50 erdgeschoss

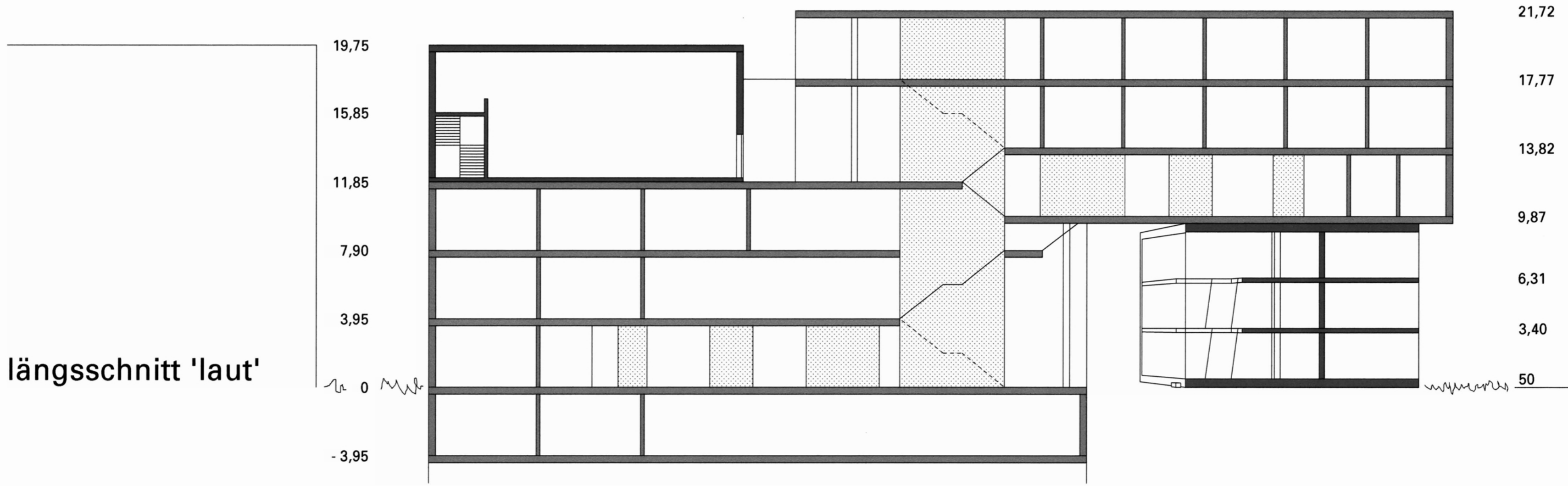
büros
besprechung
teeküche
presse

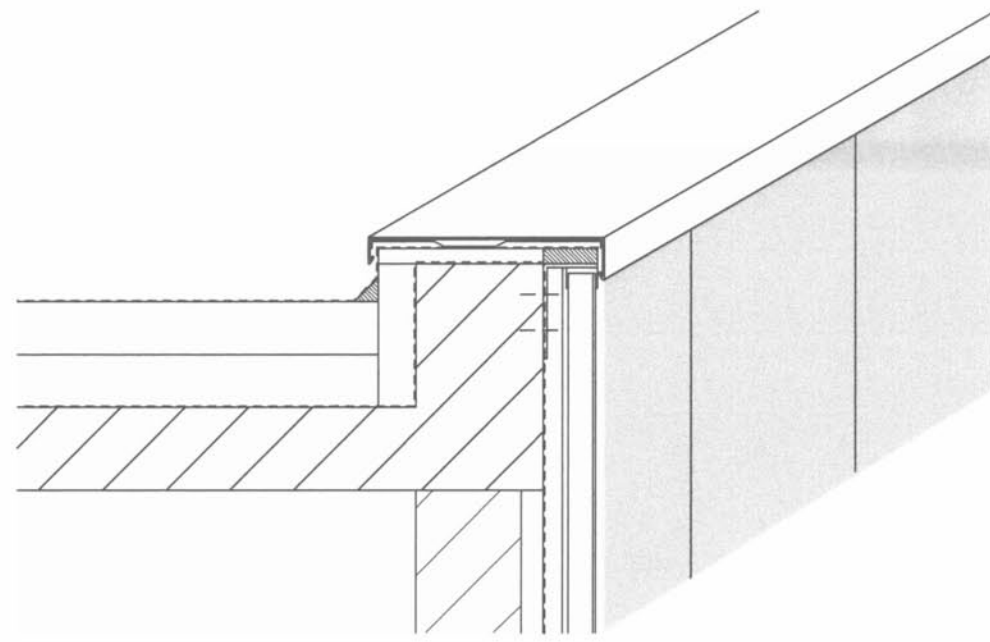


0,00 erdgeschoss

restaurant
cafe
club

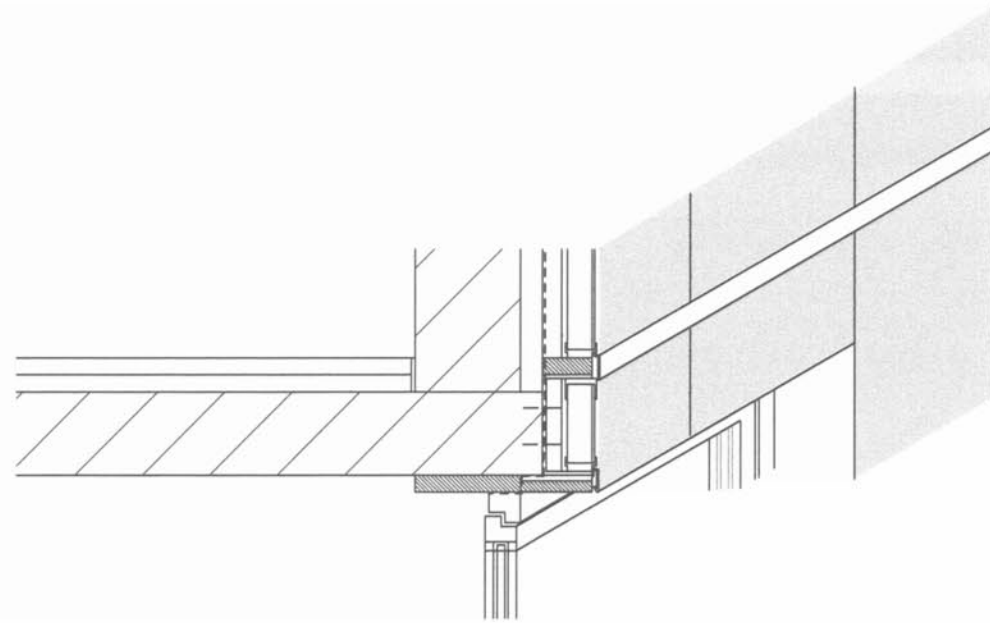
längsschnitt 'laut'



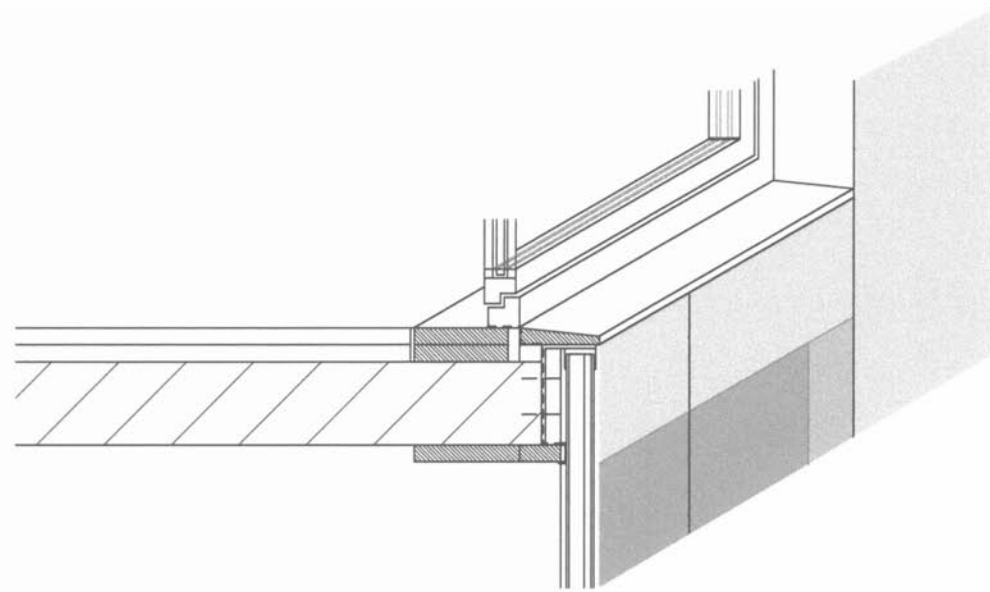


220 mm stahlbetondecke
2x100 mm polystyrolhartschaum

280 mm stahlbetonwand
dämmung steinwolle
profilbauglas einschalig K 50



35 mm gussasphalt
abdeckung
trittschalldämmung
15 mm perlitschüttung
220 mm stahlbetondecke



profilbauglas 2 schalig K 50
TWD 40 mm

